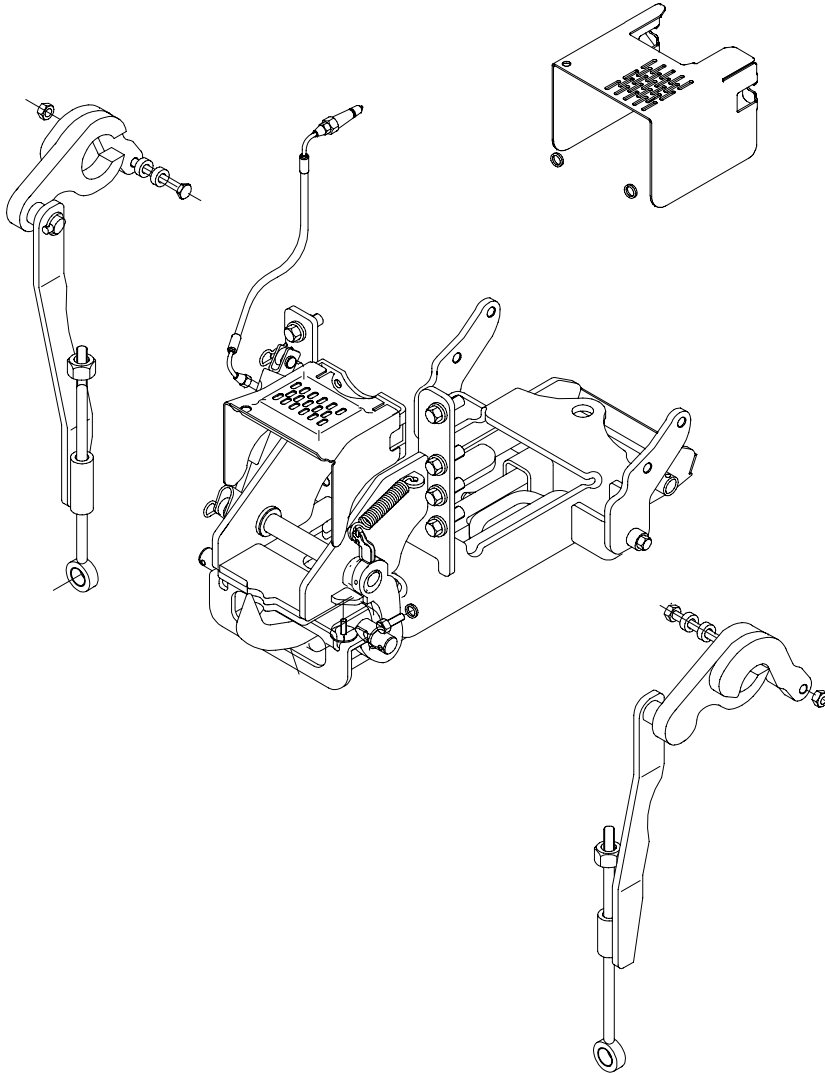


DRAWING NUMBER	REVISION	CUSTOMER NUMBER	REVISION
750-00208-02	C		

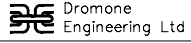
IF IN DOUBT ASK

REVISION HISTORY				
ECO No.	REV.	DESCRIPTION.	DATE.	APPROVED.
1167	A	INITIAL RELEASE	26/7/00	GB
1177	B	TOP ARMS / LIFTLINKS CHANGED	16/01/01	B.FANNING
1804	C	DETACHABLE LATCHING KIT	26/7/06	CE
1887	D	PTO GUARD CHANGE	5/1/07	CE



ITEM No.	QTY	PART NUMBER	DESCRIPTION	REMARKS.
41	1	720-00366-00	TOP ARM ASSY RH	
40	1	720-00365-00	TOP ARM ASSY LH	
39	1	720-00363-00	SLIDEPIPE ASSY RH	
38	1	720-00362-00	SLIDEPIPE ASSY LH	
37	2	P75253	LIFTRD ASSY PASS	
36				
35	1	720-00368-00	DIFFERENTIAL PLATE SASSY (RH)	
34	1	720-00367-00	DIFFERENTIAL PLATE SASSY	
33	1	720-02059-01	PTO GUARD ASSY	
32	1	720-00359-01	FRAME STANDARD PUH SASSY	
31	1	720-00314-00	BASE STANDARD PUH SASSY	
30	1	P57520	BOLT M20*100 (CUT DOWN HEAD)	
29				
28	1	720-00063-00	CLEVIS DRAWBAR	
27	1	720-00058-00	HYD CYLINDER ASSY	
26	1	720-00062-00	DRAWBAR SUBASSY (REV STD ISO)	
25	1	720-01936-00	DETACHABLE LATCHING KIT	
24	1	P78515	HOSE HYD SUBASSY	
23	1	P48715	PIN HINGE SUBASSY (PASS)	
22	1	P67050	RUBBER BUFFER	
21	1	720-00360-00	SPRING PULL	
20	2	P48832	PIN, DROP IN	
19	1	P44345	BUSHING SPACER	
18	4	P43233	BUSHING SPACER	
17	2	F94453	SPRING WASHER 5/8" YP HEAVY DUTY	
16	2	F90527	FLAT WASHER, M30 YELL. PASS	
15	8	F90521	FLAT WASHER, M16 YELL. PASS	
14	2	F90520	FLAT WASHER, M14 YELL. PASS	
13	1	F90518	FLAT WASHER, M10 YELL. PASS	
12	8	F89665	SET SCREW, M16*45 8.8 YP HEX HD M	
11	4	F88763	HI LOCK NUT, M20 8.0 YP HEX M (P)	
10	1	F88758	HI LOCK NUT, M10 8.0 YP HEX M (P)	
9	1	F88742	HI LOCK NUT, M8.8.0 SILV HEX M (P)	
8	2	F88609	NUT, M16 8.0 BLK HEX M	
7	2	F88182	R CLIP SINGLE 4 MM YP	
6	2	F88173	LINCH PIN M8*40 YP	
5	2	F88143	SPLIT PIN M8*40 YP	
4	1	F86112	BOLT M20*100 YP HEX HD M	
3	2	F86110	BOLT M20*85 YP HEX HD M	
2	1	F86224	BOLT M8*60 YP HEX HD M	
1	2	F85468	BOLT M16*100 BLK HEX HD M	

DIMENSIONS IN MILLIMETRES UNLESS OTHERWISE SPECIFIED		TOLERANCES TO BE AS SPECIFIED BELOW UNLESS OTHERWISE STATED				
DRAWING AND TOLERANCING TO BS 308: PARTS 1 & 2 & 3.	NOMINAL SIZE OF LINEAR DIMENSIONS	OVER TO	120	315	1000	
	0 OR 1 DECIMAL PLACES		±0.8	±1.2	±2.0	±3.0
	2 DECIMAL PLACES		±0.25			
	ANGULAR TOLERANCE		±0° 30'			
						LANDINI VISION STD
						NEXT ASSY. USED ON.
						APPLICATION.

SIGN OFF		DATE	 <b>Dromone Engineering Ltd</b> Dromone, Digossett, Co. Meath Ireland. Telephone: 353-044-68346. Fax: 353-044-68238.
DRAWN BY P.LARKIN		26/7/00	
CHECKED BY			DRAWING TITLE
PROG. ENG.		26/7/00	LANDINI VISION STD
APPROVED BY			SIZE
SUPPLIER ACCEPTANCE			DRAWING NUMBER
APPROVED BY CUSTOMER			750-00208-02
FINISH			SCALE
			N/A
			REV LETTER
			C
			SHEET
			2 OF 2