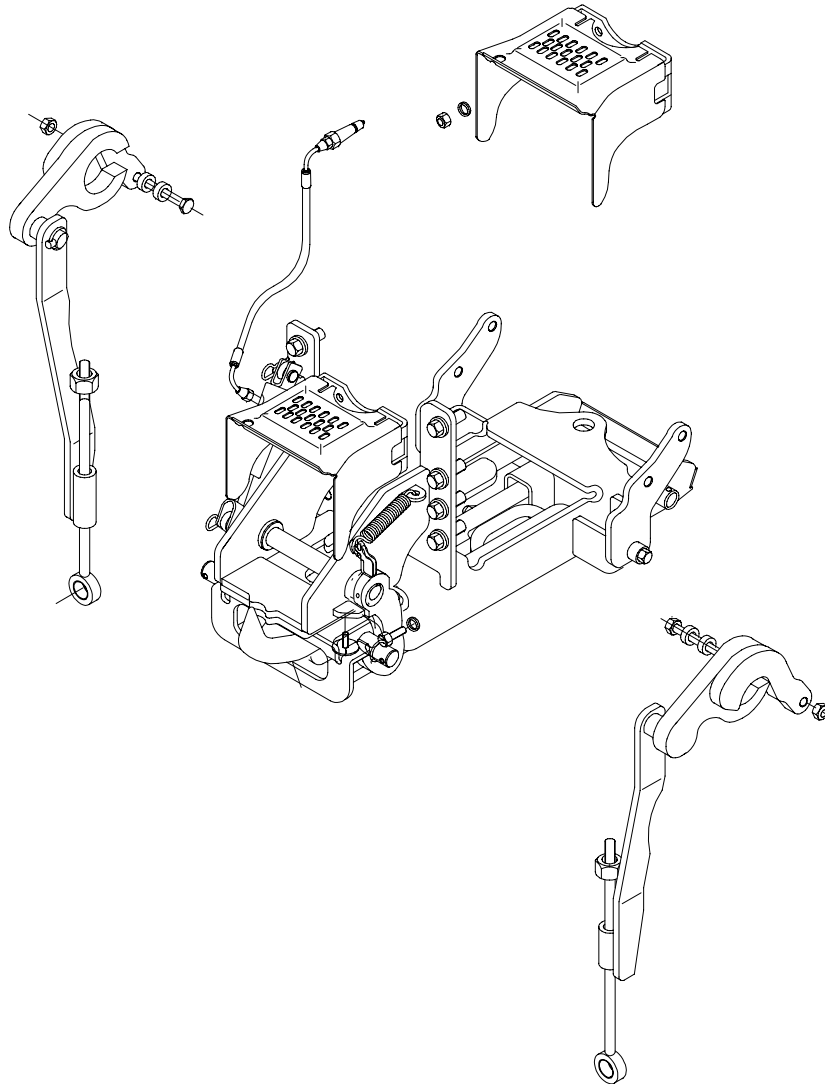


DRAWING NUMBER 750-00013-000
 REVISION B
 CUSTOMER NUMBER
 REVISION


IF IN DOUBT ASK

REVISION HISTORY				
ECO No.	REV.	DESCRIPTION.	DATE.	APPROVED.
1167	A	INITIAL RELEASE	26/7/00	GB
1177	B	TOP ARMS / LIFTLINKS CHANGED	16/01/01	B.FANNING
1804	C	DETACHABLE LATCHING KIT	26/1/06	GE



41	1	720-00366-00	TOP ARM ASSY RH
40	1	720-00365-00	TOP ARM ASSY LH
39	1	720-00363-00	SLIDEPIPE ASSY RH
38	1	720-00362-00	SLIDEPIPE ASSY LH
37	2	P75253	LIFTROD ASSY PASS
36			
35	1	720-00368-00	DIFFERENTIAL PLATE SASSY (RH)
34	1	720-00367-00	DIFFERENTIAL PLATE SASSY
33	1	720-00364-00	PTO GUARD & BRACKET SASSY
32	1	720-00359-01	FRAME STANDARD PUH SASSY
31	1	720-00314-00	BASE STANDARD PUH SASSY
30	1	P57520	BOLT M20*100 (CUT DOWN HEAD)
29			
28	1	720-00063-00	CLEVIS DRAWBAR
27	1	720-00058-00	HYD CYLINDER ASSY
26	1	720-00062-00	DRAWBAR SUBASSY (REV STD ISO)
25	1	700-01585-00	DETACHABLE LATCHING KIT
24	1	P78515	HOSE HYD SUBASSY
23	1	P48715	PIN HINGE SUBASSY (PASS)
22	1	P57050	RUBBER BUFFER
21	1	720-00360-00	SPRING PULL
20	2	P48832	PIN, DROP IN
19	1	P44345	BUSHING SPACER
18	4	P43233	BUSHING SPACER
17	2	F94453	SPRING WASHER 5/8" YP HEAVY DUTY
16	2	F90527	FLAT WASHER, M30 YELL PASS
15	8	F90521	FLAT WASHER, M16 YELL PASS
14	4	F90520	FLAT WASHER, M14 YELL PASS
13	1	F90518	FLAT WASHER, M10 YELL PASS
12	8	F89665	SET SCREW, M16*45 8.8 YP HEX HD M
11	4	F88763	HI LOCK NUT, M20 8.0 YP HEX M (P)
10	1	F88758	HI LOCK NUT, M10 8.0 YP HEX M (P)
9	1	F88742	HI LOCK NUT, M8.8.0 SILV HEX M (P)
8	2	F88609	NUT, M16 8.0 BLK HEX M
7	2	F88182	R CLIP SINGLE 4 MM YP
6	2	F88173	LINCH PIN M8*40 YP
5	2	F88143	SPLIT PIN M8*40 YP
4	1	F86112	BOLT M20*100 YP HEX HD M
3	2	F86110	BOLT M20*85 YP HEX HD M
2	1	F86224	BOLT M8*60 YP HEX HD M
1	2	F85468	BOLT M16*100 BLK HEX HD M

ITEM No.	QTY	PART NUMBER	DESCRIPTION	REMARKS
THE USE, DUPLICATION OR DISCLOSURE OF THIS DATA (IN WHOLE OR IN PART) FOR MANUFACTURE OR PROCUREMENT WITHOUT THE WRITTEN PERMISSION OF DROMONE ENGINEERING LIMITED IS STRICTLY PROHIBITED.				
		SIGN OFF	DATE	
		DRAWN BY: P.LARKIN	26/7/00	
		CHECKED BY:		
		PRO ENG.	26/7/00	
		APPROVED BY:		
		SUPPLIER ACCEPTANCE		
		APPROVED BY CUSTOMER		


Dromone Engineering Ltd
 Dromone, Diggcastle, Co. Meath Ireland.
 Telephone: 353-044-66346.
 Fax: 353-044-66236.

DRAWING TITLE: LANDINI GHIBILI 80/90/100 UK
 DRAWING NUMBER: 750-00013-00
 SCALE: N/A
 REV LETTER: B
 SHEET: 2 of 2

DIMENSIONS IN MILLIMETRES UNLESS OTHERWISE SPECIFIED	TOLERANCES TO BE AS SPECIFIED BELOW UNLESS OTHERWISE STATED				
	NOMINAL SIZE OF LINEAR DIMENSIONS	10	120	315	1000
DRAWING AND TOLERANCING TO BS 308; PARTS 1 & 2 & 3.	0 OR 1 DECIMAL PLACES	±0.8	±1.2	±2.0	±3.0
	2 DECIMAL PLACES		±0.25		
	ANGULAR TOLERANCE		±0' 30"		

NEXT ASSY. USED ON. APPLICATION.